



© Robinsons Estate Agents

Porter Close, Aykley Heads, DH1 5ZL  
3 Bed - House - Mid Terrace  
O.I.R.O £190,000

**ROBINSONS**  
SALES • LETTINGS • AUCTIONS • SURVEYS

# Porter Close

## Aykley Heads, DH1 5ZL

Early Viewing Advised \*\* Integral Fridge/Freezer, Washing Machine, Oven & Hob \*\* Prime & Popular Location \*\* Close to Major Schooling, Amenities & Road Links \*\* Double Glazing & GCH \*\* Gardens & Parking \*\*

The floor plan comprises: entrance hallway, lovely open plan lounge/dining and kitchen with some integral appliances and french doors opening to the rear garden. There is also a downstairs WC. The first floor has two bedrooms and family bathroom. The master bedroom is located on the second floor. Outside the front has parking and the rear enjoys an enclosed garden.

Situated to the north of the historic city of Durham, Aykley Woods boasts an excellent location close to businesses, shops and all that Durham has to offer. With a choice of apartments and three, four and five bedroom homes, this development is perfect for first time buyers through to growing families. Aykley Woods will benefit from Durham's excellent transport links and good choice of schooling, as well as one of the UK's top universities.



© Robinsons Estate Agents



© Robinsons Estate Agents



© Robinsons Estate Agents



© Robinsons Estate Agents



© Robinsons Estate Agents



© Robinsons Estate Agents



© Robinsons Estate Agents



© Robinsons Estate Agents



© Robinsons Estate Agents



### Agent Notes

Electricity Supply: Mains

Water Supply: Mains

Sewerage: Mains

Heating: Gas Central Heating

Broadband: Ultra-fast 1000Mbps

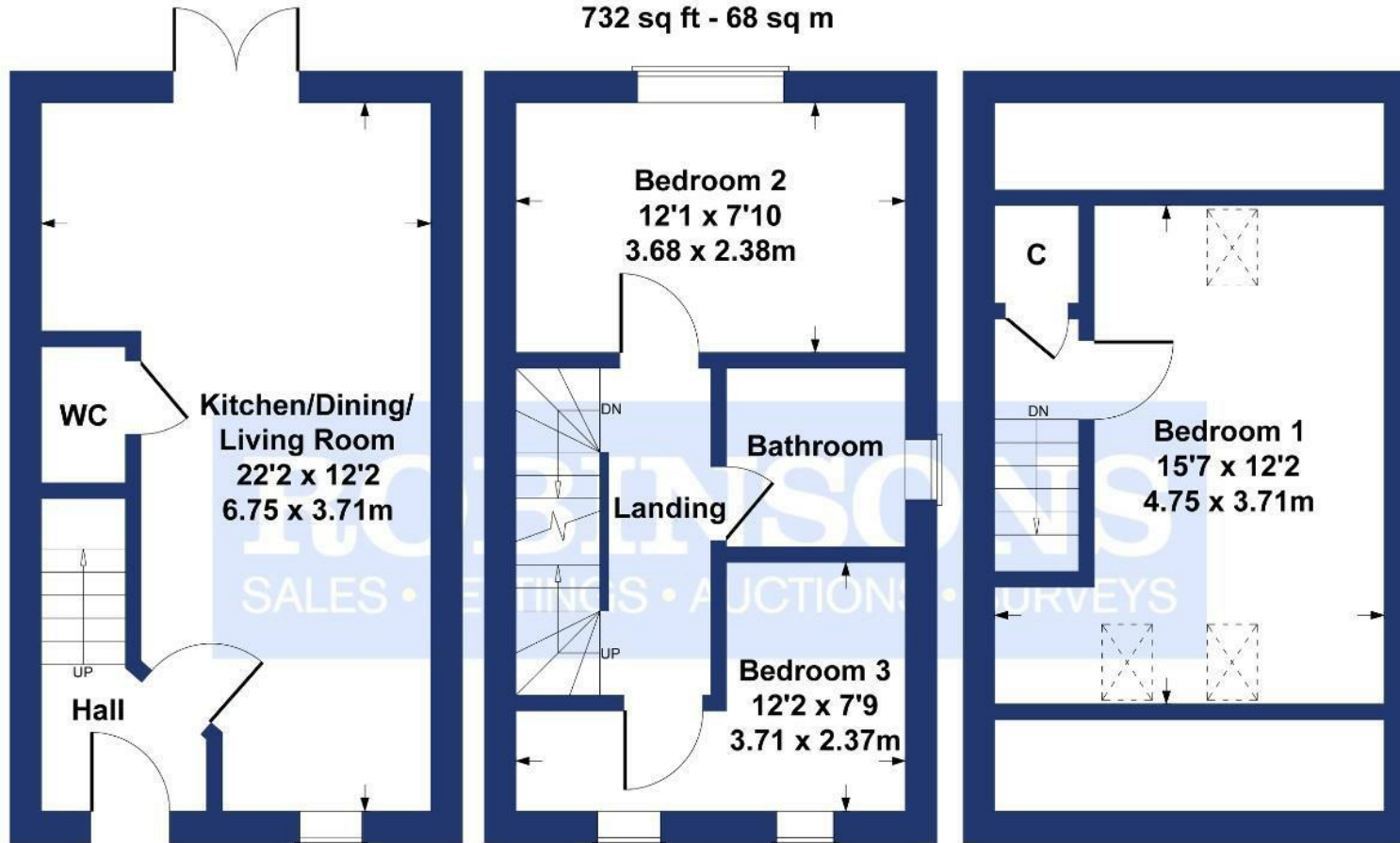
Mobile Signal/Coverage: Average

Disclaimer: The preceding details have been sourced from the Landlord and OnTheMarket.com. Verification and clarification of this information, along with any further details concerning Material Information parts A, B & C, should be sought from a legal representative or appropriate authorities. Robinsons cannot accept liability for any information provided.



# Porter Close

Approximate Gross Internal Area  
732 sq ft - 68 sq m



**GROUND FLOOR**

**FIRST FLOOR**

**SECOND FLOOR**

**SKETCH PLAN FOR ILLUSTRATIVE PURPOSES ONLY**

All measurements walls, doors, windows, fittings and appliances, their sizes and locations, are approximate only. They cannot be regarded as being a representation by the seller, nor their agent.

Produced by Potterplans Ltd. 2026

Energy Efficiency Rating		Current	Potential
Very energy efficient - lower running costs			
(82 plus)	A		
(61-81)	B		
(49-60)	C		
(35-48)	D		
(29-34)	E		
(21-28)	F		
(1-20)	G		
Not energy efficient - higher running costs			
England & Wales		EU Directive 2002/91/EC	

For clarification we wish to inform prospective purchasers that we have prepared these sales particulars as a general guide. We have not carried out a detailed survey, nor tested the services, appliances and specific fittings. Room sizes should not be relied upon for carpets and furnishings, if there are important matters which are likely to affect your decision to buy, please contact us before viewing the property. Robinsons can recommend financial services, surveying and conveyancing services to sellers and buyers. Robinsons staff may benefit from referral incentives relating to these services.



© Robinsons Estate Agents

1 Old Elvet, Durham City, Durham, DH1 3HL  
Tel: 0191 386 2777  
info@robinsonsdurham.co.uk  
www.robinsonsestateagents.co.uk

